

**Coordination Meeting of Finger Lakes Managers  
March 3, 2003**

**Seneca Falls, NY**

**Agenda**

1. Background (Baldwinsville Gate Failure)
2. Current Conditions
3. Lake Regulation Curves
4. Proposed Contingency Concept
5. Discussion
6. Other Items

## 15-Day Weather Forecast

Syracuse, NY

---

**Monday 3/3** Partly sunny and cold  
High 7° F Low 3° F

**Tuesday 3/4** A stray flurry in the morning, otherwise mostly cloudy  
High 34° F Low 29° F

**Wednesday 3/5** On and off snow and rain in the morning, turning breezy in the afternoon; cloudy  
High 41° F Low 9° F

**Thursday 3/6** Cold with clouds and sunshine  
High 25° F Low 17° F

**Friday 3/7** A flurry or two possible in the morning, otherwise mostly cloudy  
High 39° F Low 21° F

**Saturday 3/8** Cold with clouds yielding to sun  
High 30° F Low 13° F

**Sunday 3/9** Cloudy and very cold with snow much of the time  
High 25° F Low 3° F

**Monday 3/10** Very cold with times of clouds and sun  
High 20° F Low 2° F

**Tuesday 3/11** Very cold with periods of clouds and sunshine  
High 24° F Low 9° F

**Wednesday 3/12** Snow; cloudy and very cold  
High 26° F Low 7° F

**Thursday 3/13** Very cold with sun and some clouds  
High 24° F Low 5° F

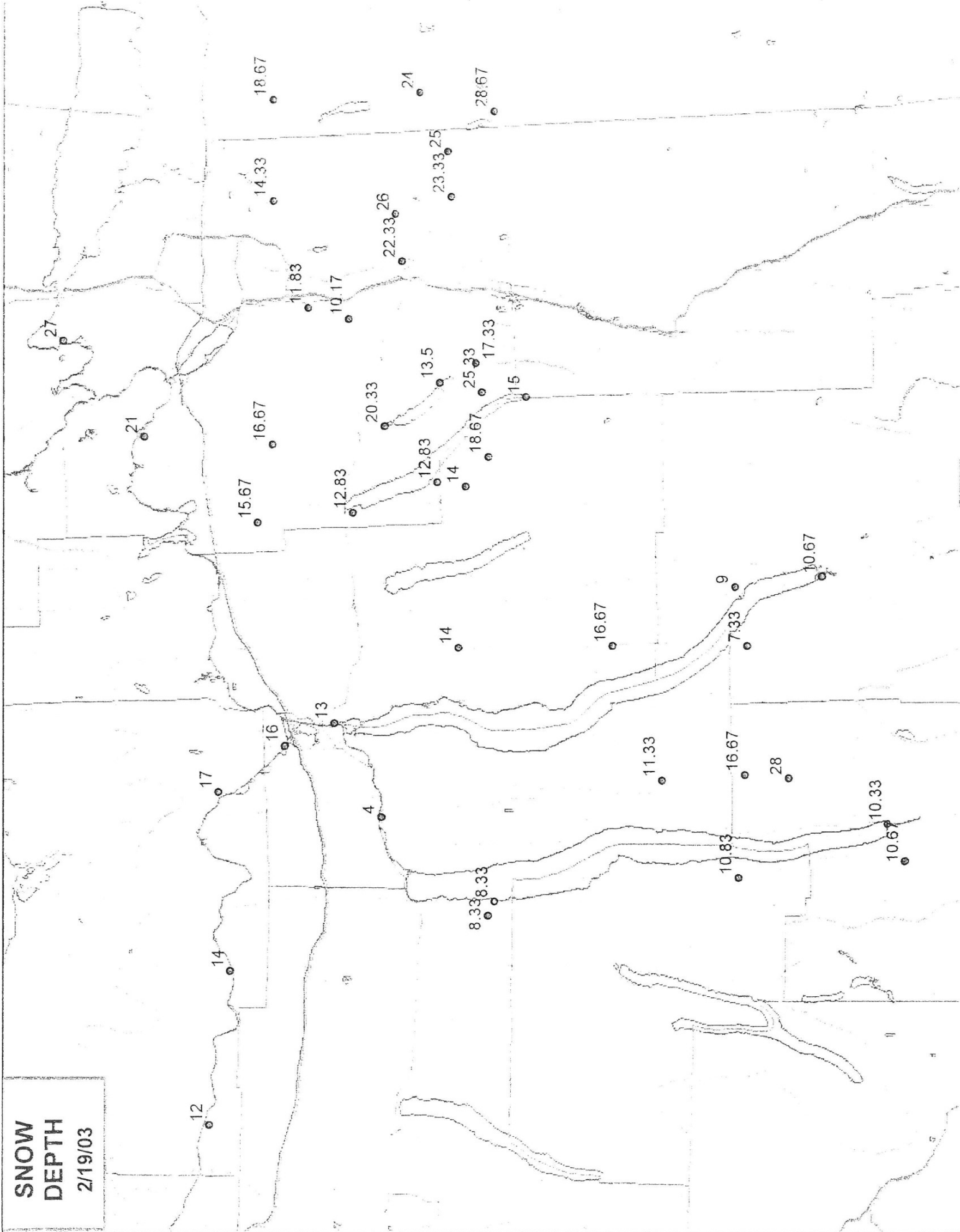
**Friday 3/14** Times of clouds and sun  
High 40° F Low 22° F

**Saturday 3/15** Intervals of clouds and sunshine  
High 43° F Low 23° F

**Sunday 3/16** Cloudy with a mix of snow, ice and rain  
High 38° F Low 19° F

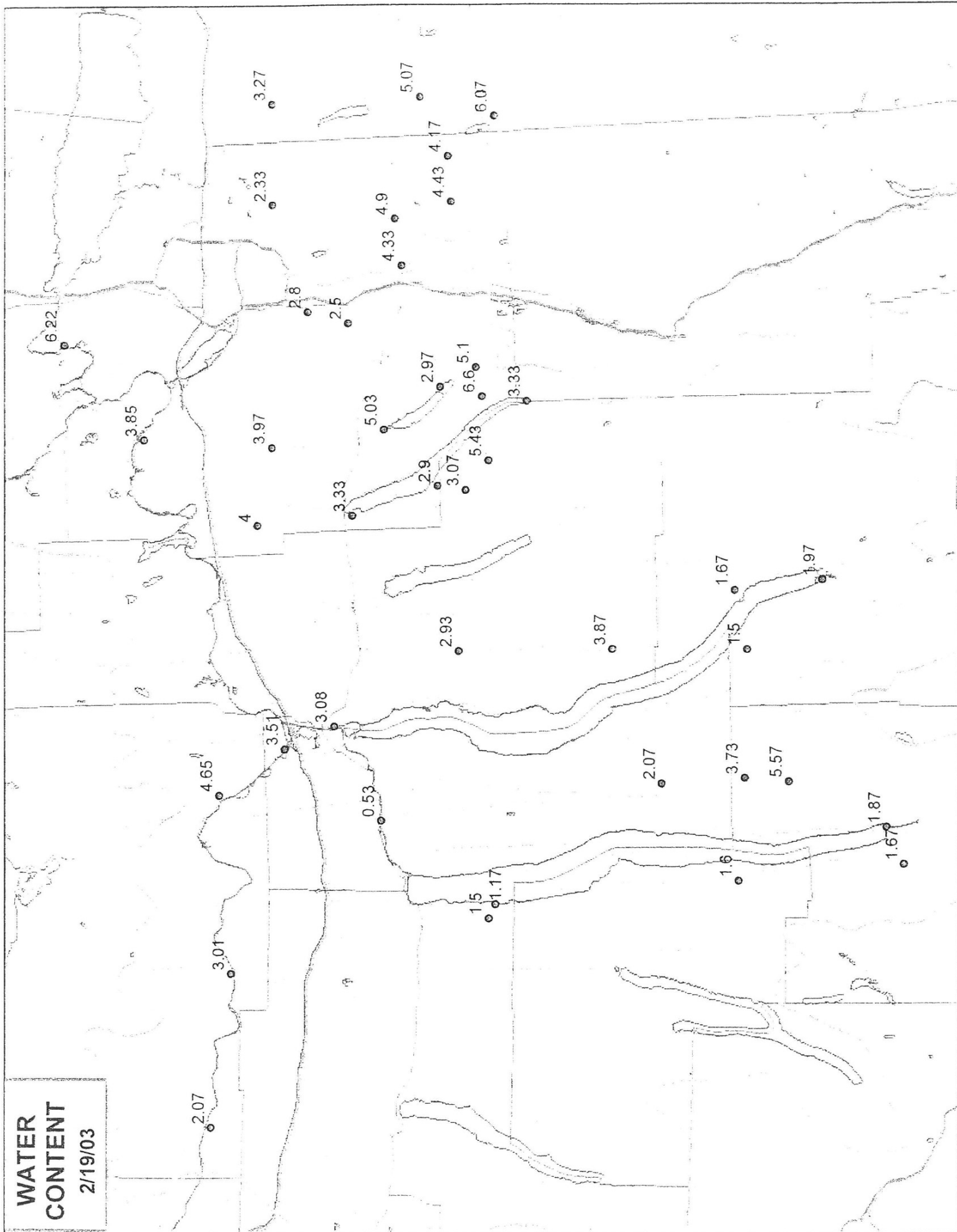
**Monday 3/17** Cold with variable cloudiness  
High 37° F Low 25° F

**SNOW  
DEPTH  
2/19/03**



**WATER  
CONTENT**

2/19/03



**FINGER LAKES AREA**  
**Current Discharge Summary**

Lake	Surface Area sq. mi.	Watershed Area sq. mi.	Current Level ft.	Desired Level ft.	Current Discharge cfs	Drawdown Rate (assuming no inflow)		Time to Reach Lower Rule Curve Limit (assuming no inflow)	
						ft/day	Tenth ft/d	days	date
Canandaigua	17	184	686.95	686.92	64	0.012	0.12	2.5	03/05/02
Keuka	18	182	712.5	712.0	15	0.003	0.03	(N/A)	(N/A)
Seneca	68	704	444.9	444.7	950	0.043	0.43	4.7	03/08/03
Cayuga	67	1,564	380.2	379.8	1,660	0.033	0.33	12.2	03/15/02
Owasco	11	205	710.2	710.0	461	0.135	1.35	1.5	03/05/02

Clyde River 620  
**TOTAL 2,805**

Seneca River  
 - Port Byron 4,320  
 - Baldwinsville 4,520